

Behoort bij besluit van  
Burgemeester en wethouders  
van de gemeente Etten-Leur  
Int. kenmerk:  
2023OG0410-01



ALLE MATEN IN HET WERK TE CONTROLEREN

ATELIER2  
ARCHITECTEN

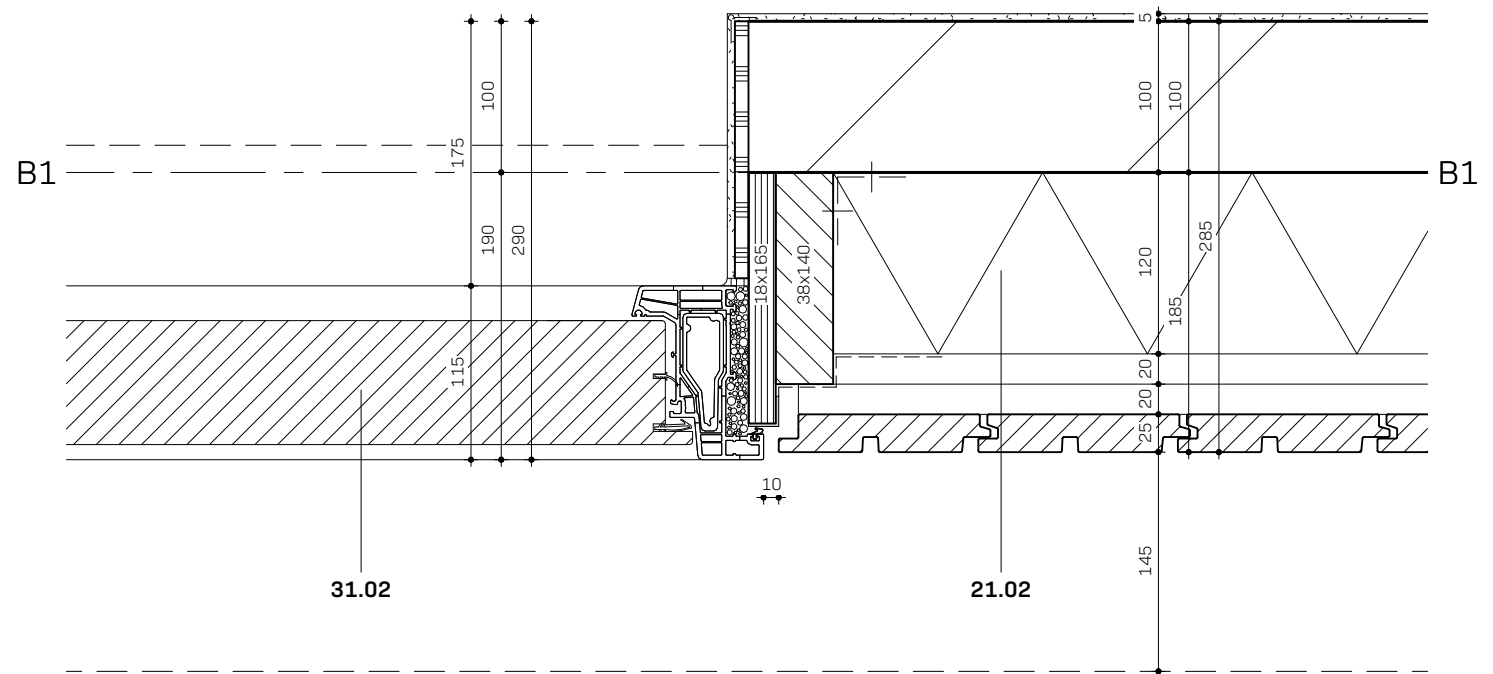
**Het Jacobusbos Etten-Leur BV**  
**herontwikkeling Edward Poppelaan Etten-Leur**  
**2012-116**

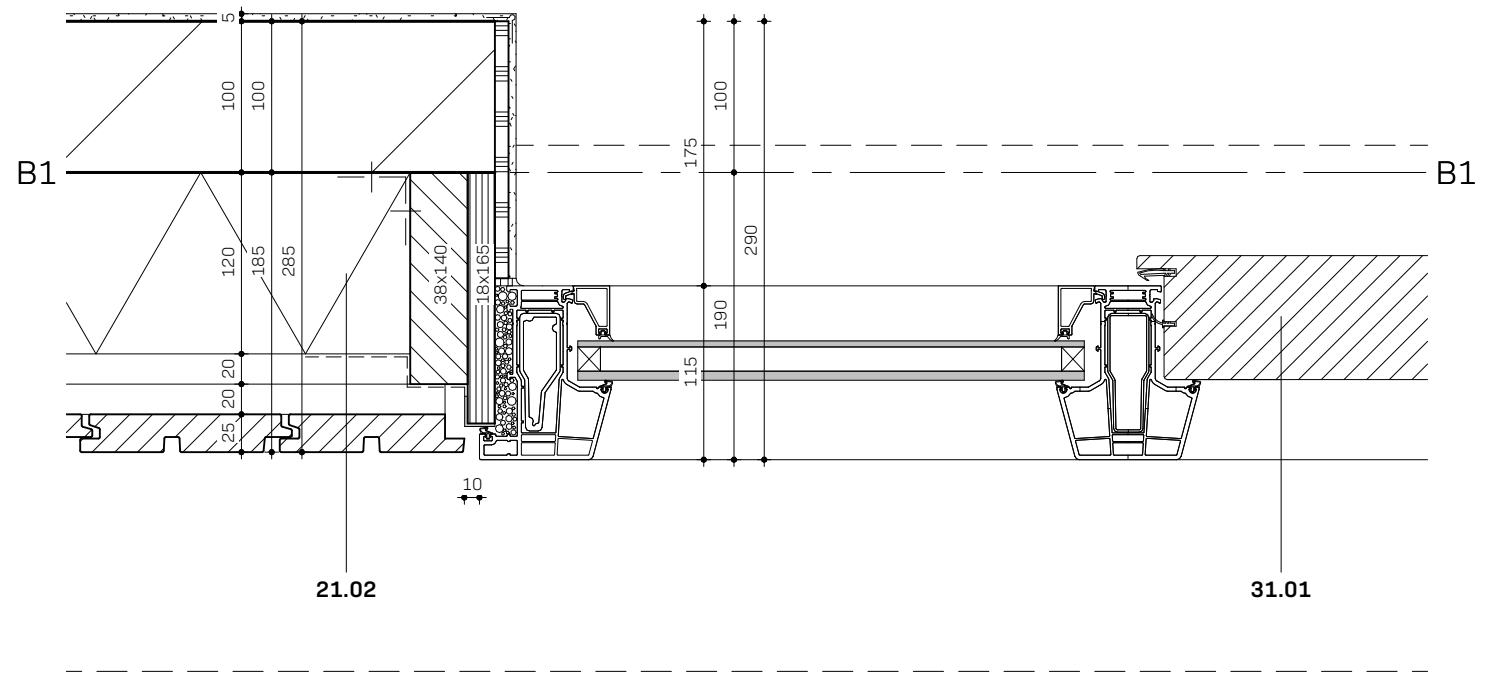
BLOK 1 - patiowoningen details

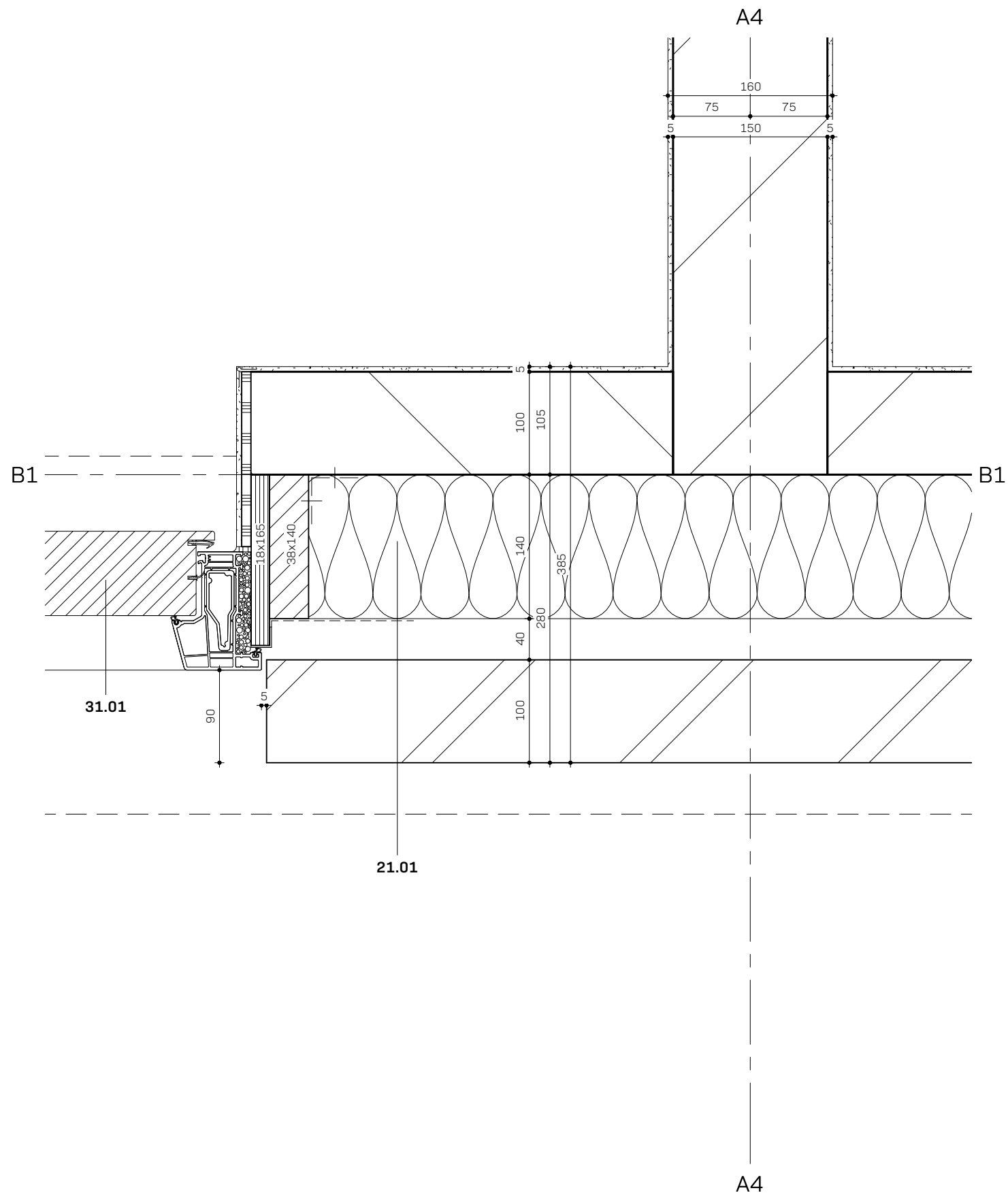
OMGEVINGSVERGUNNING  
DEFINITIEF: 25.07.2023

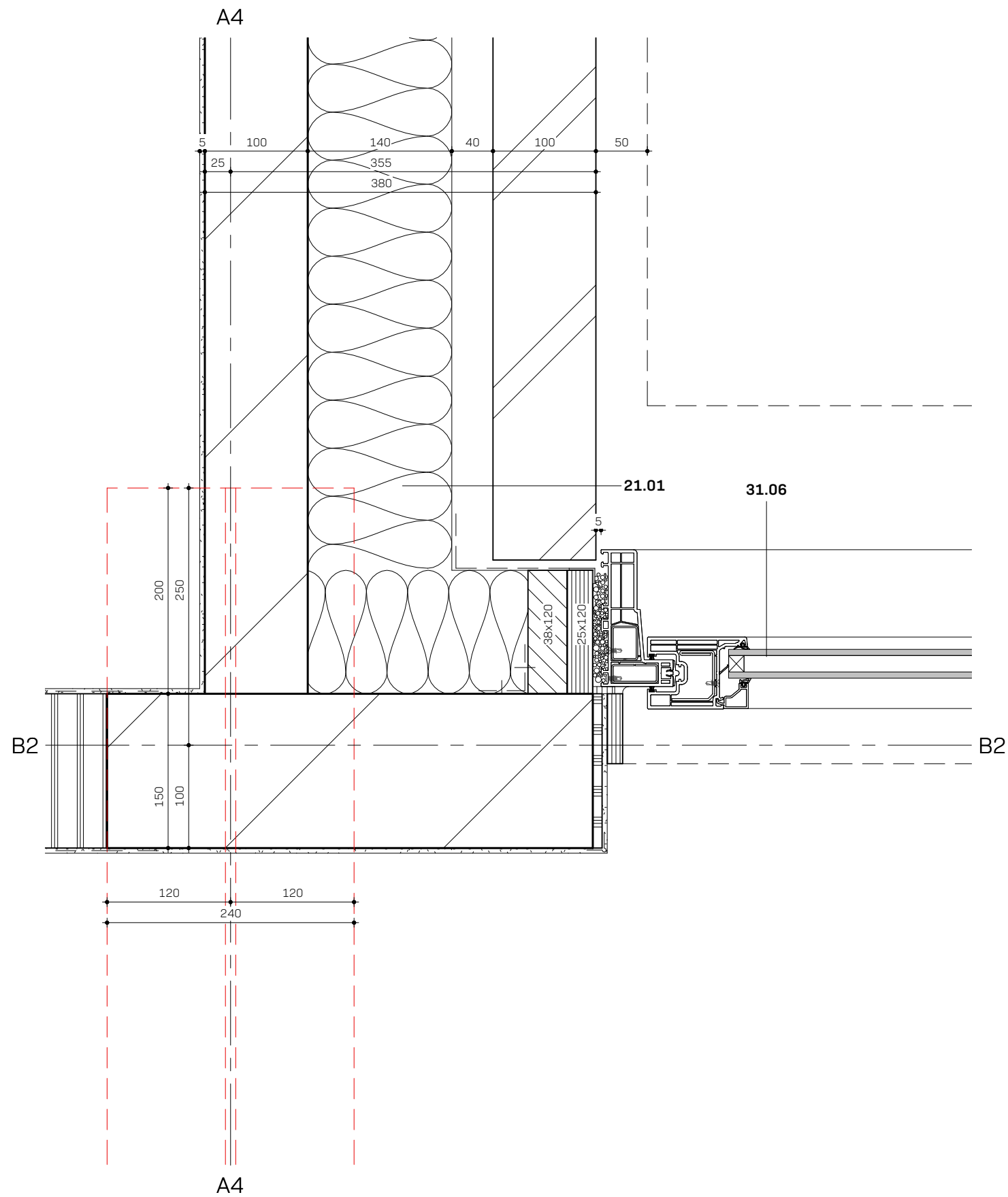
DO | 1:5

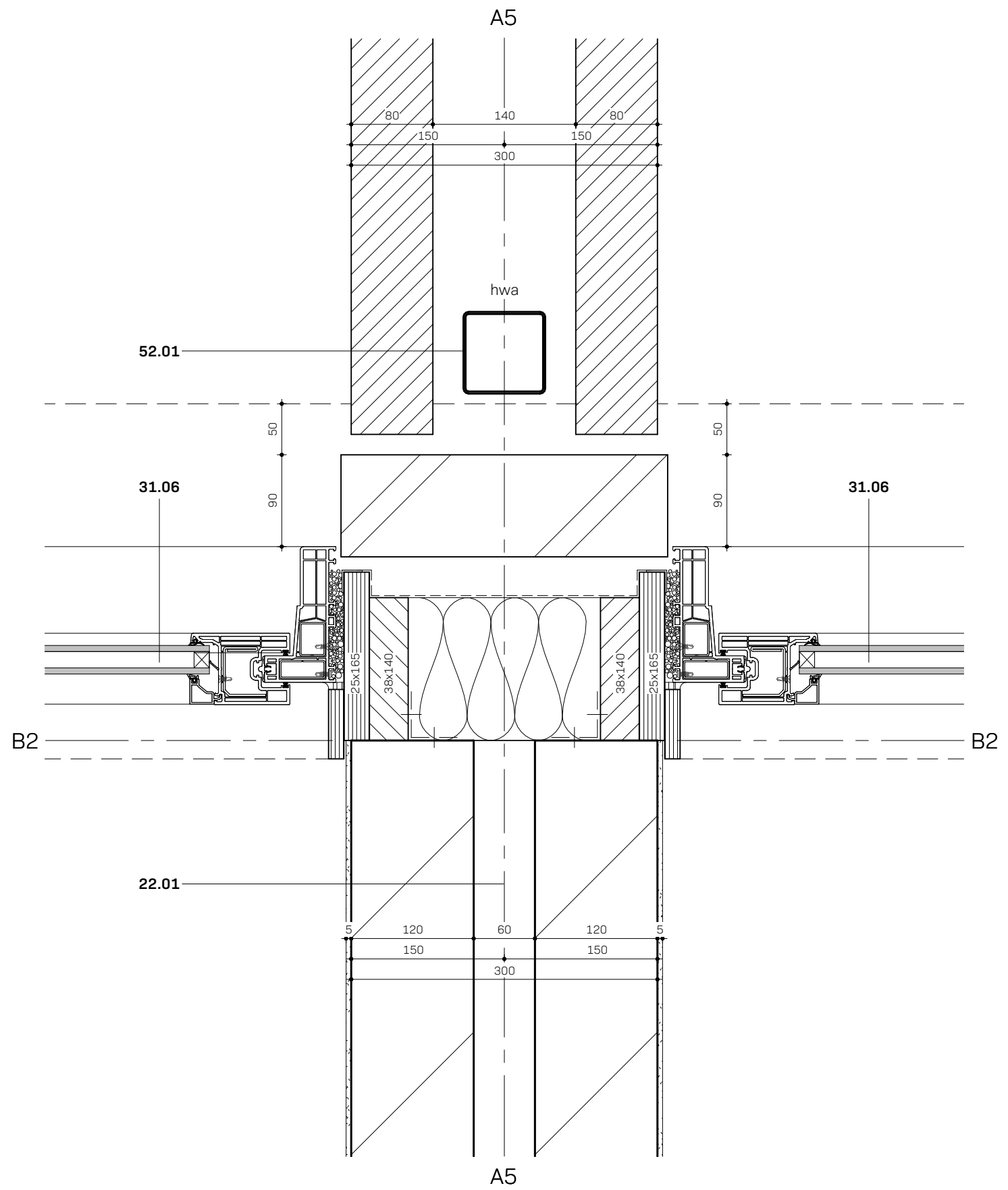
**DO 40**

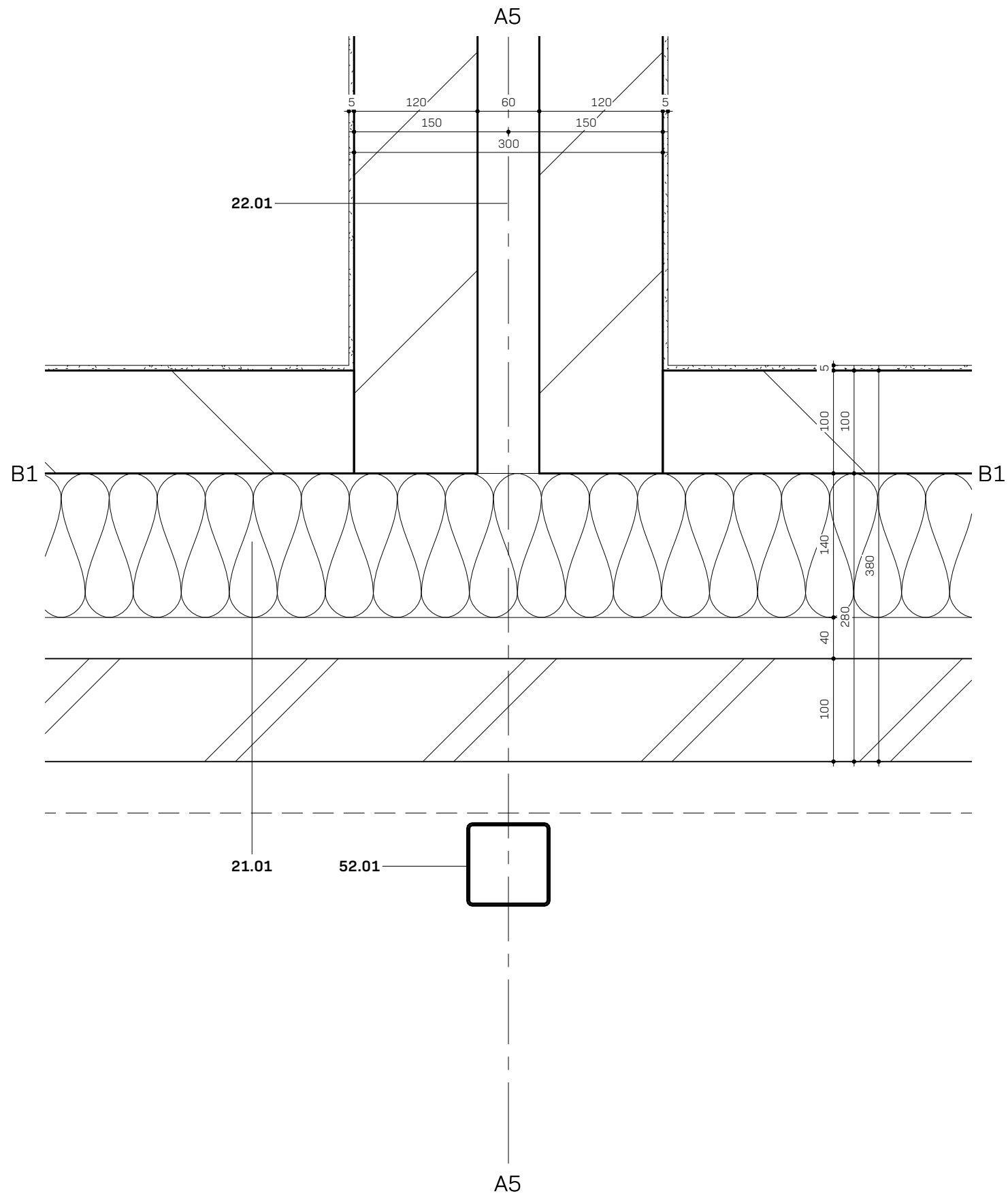


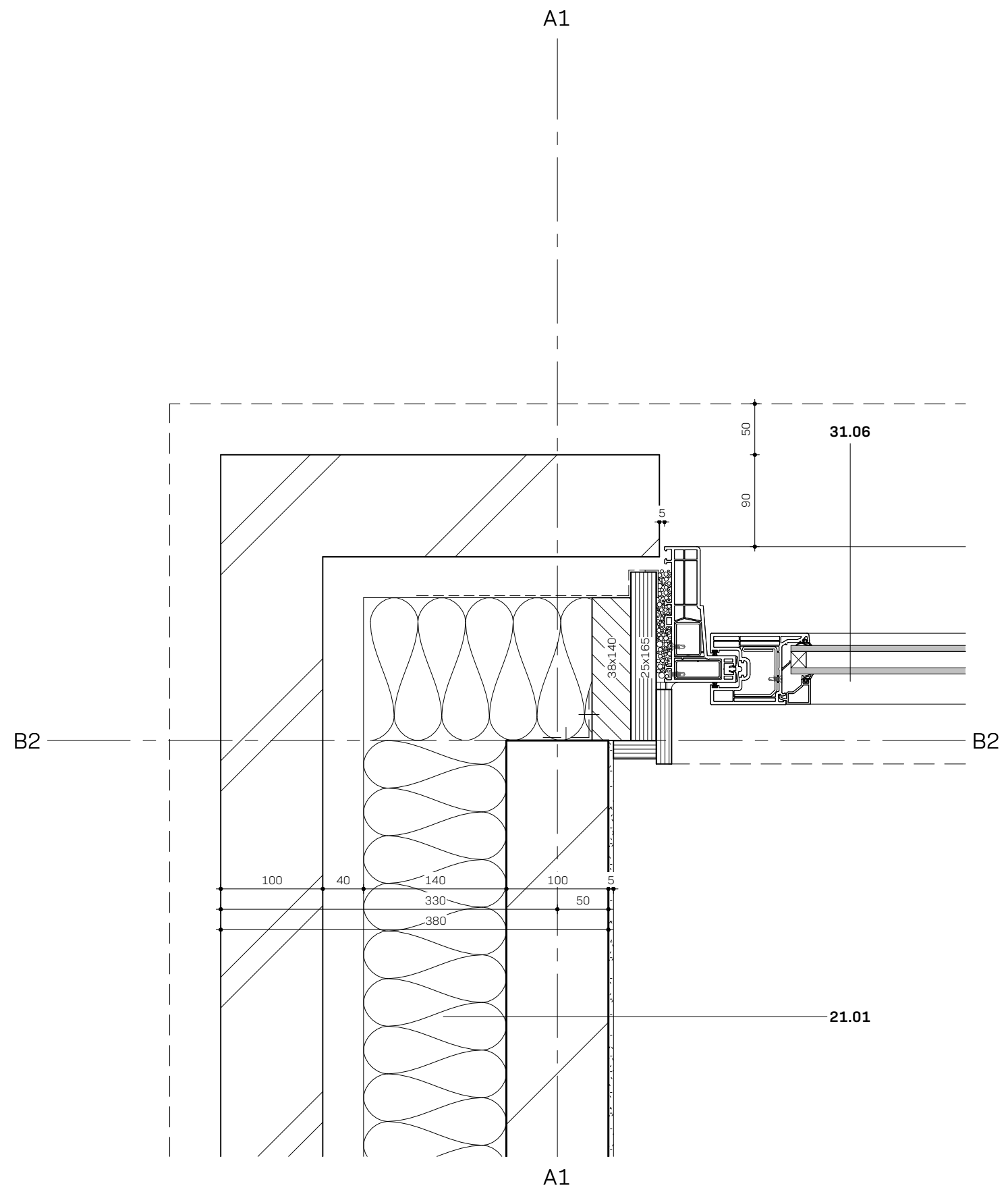




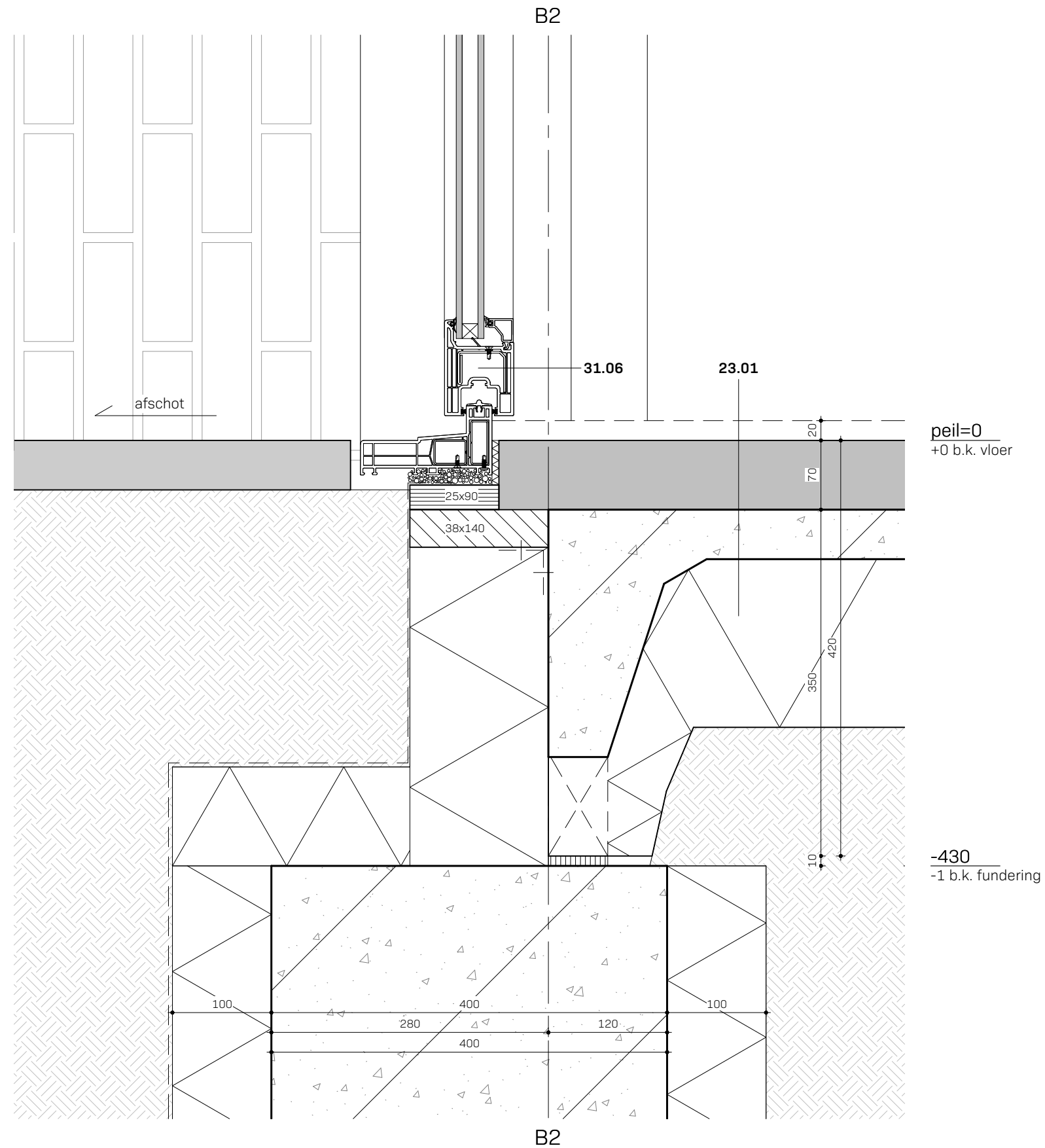


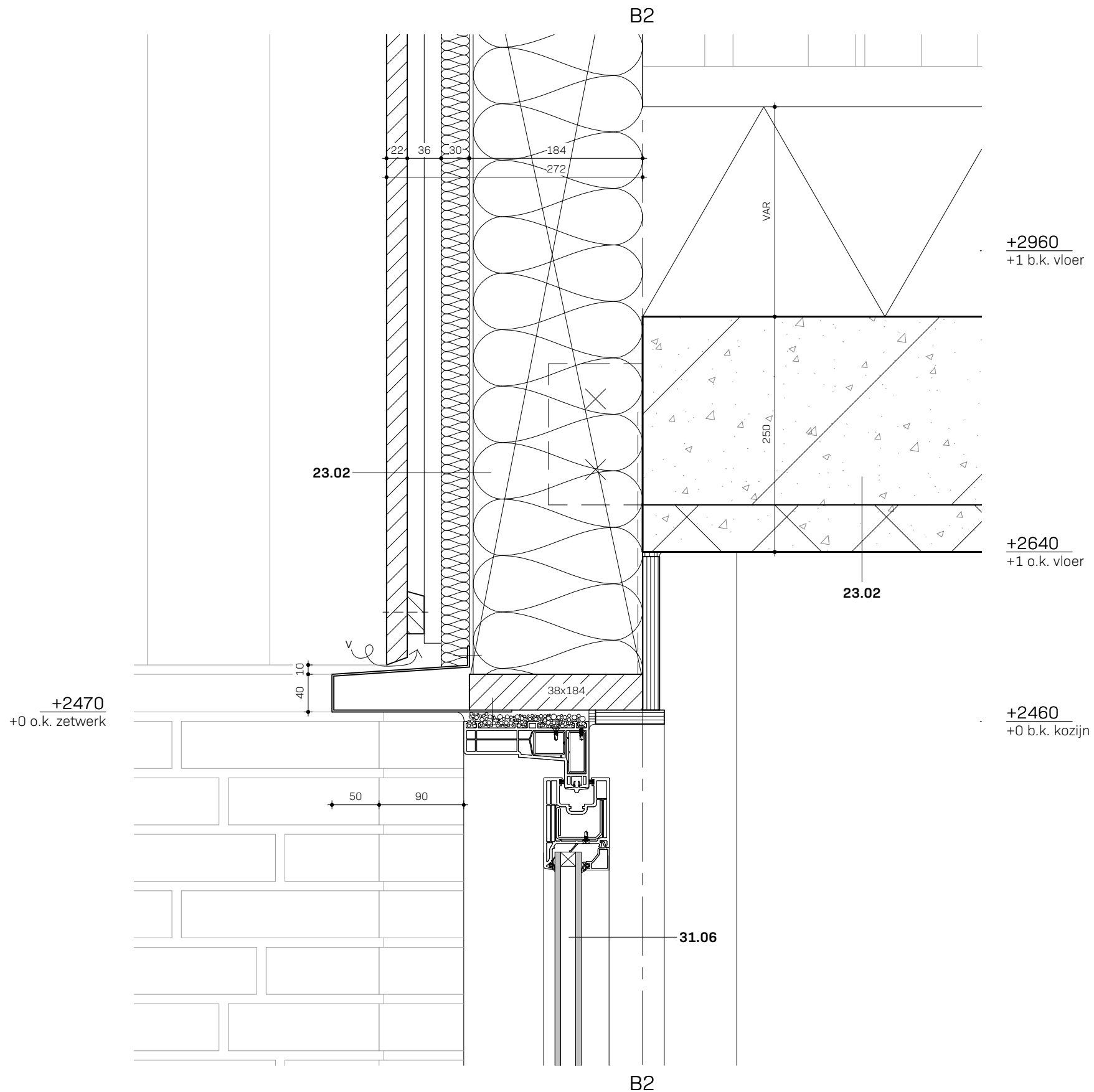


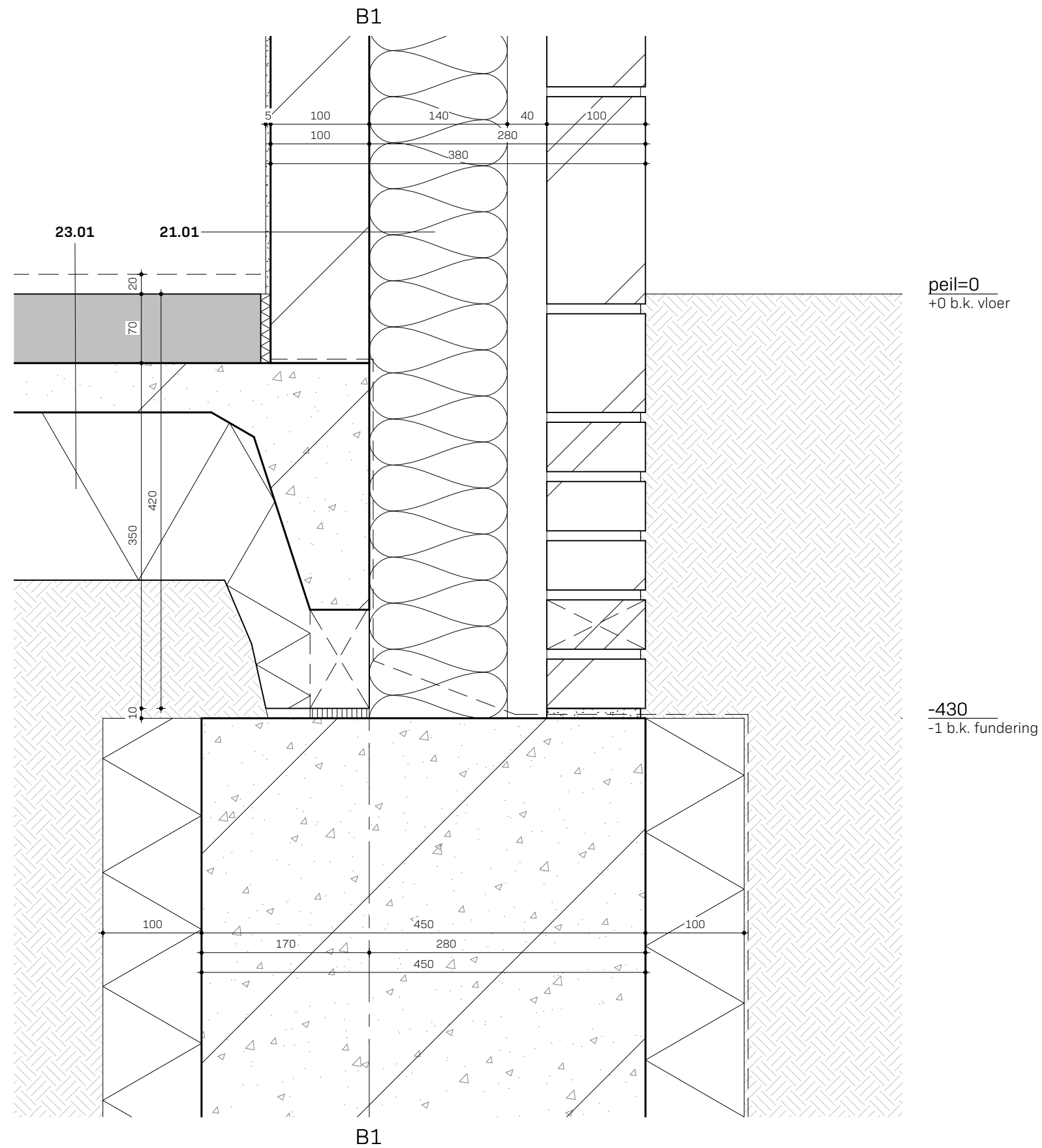


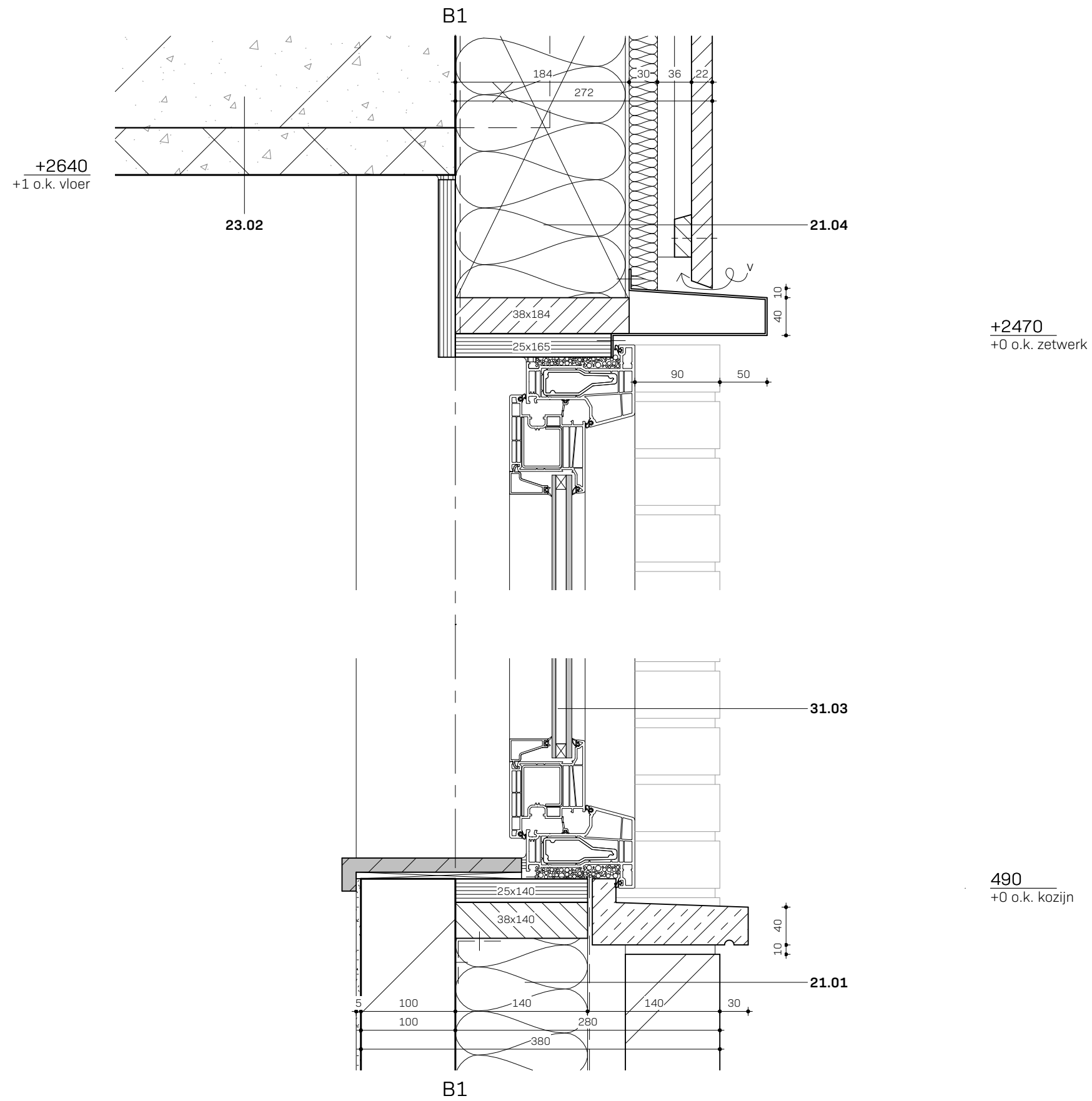




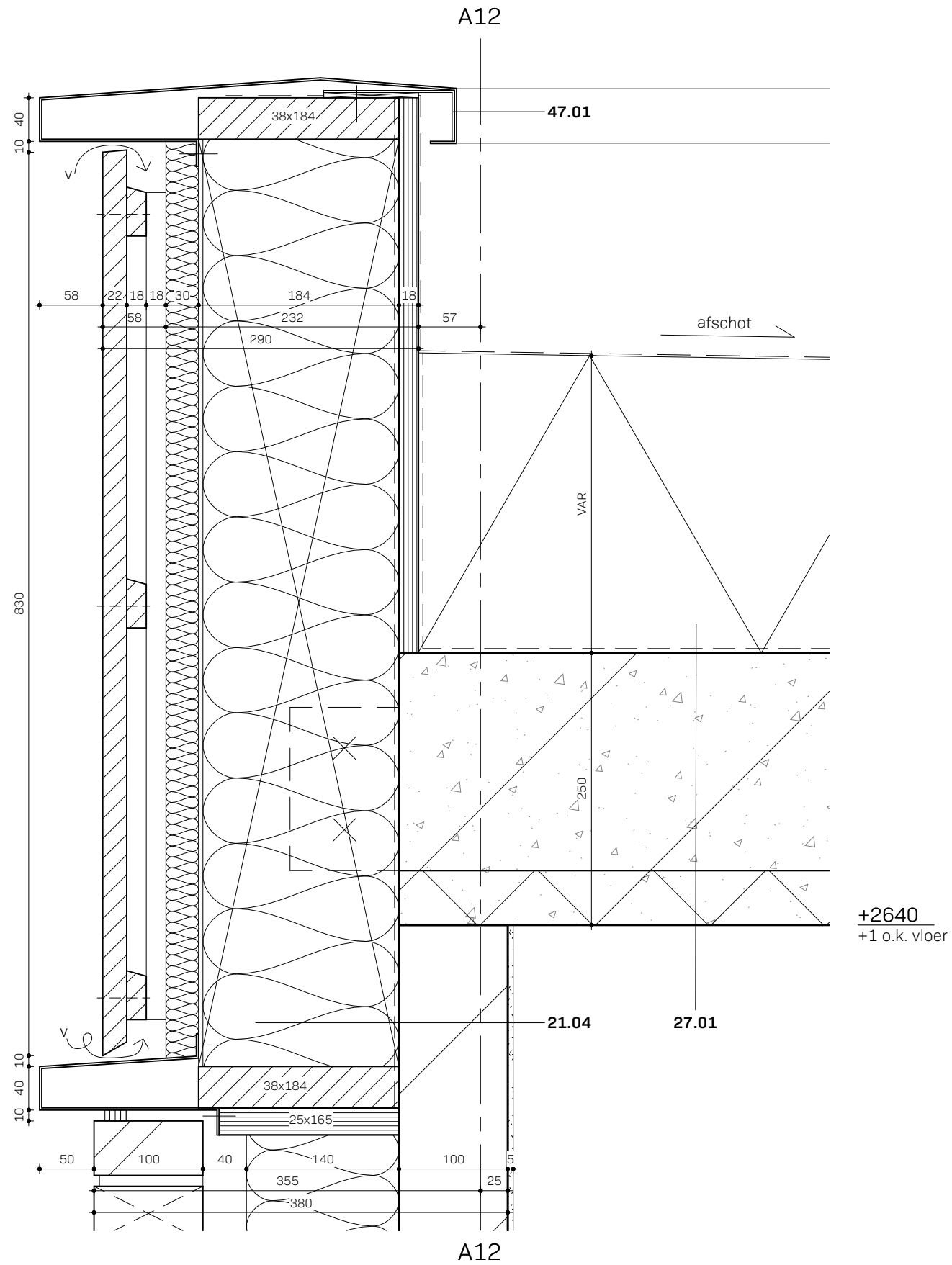






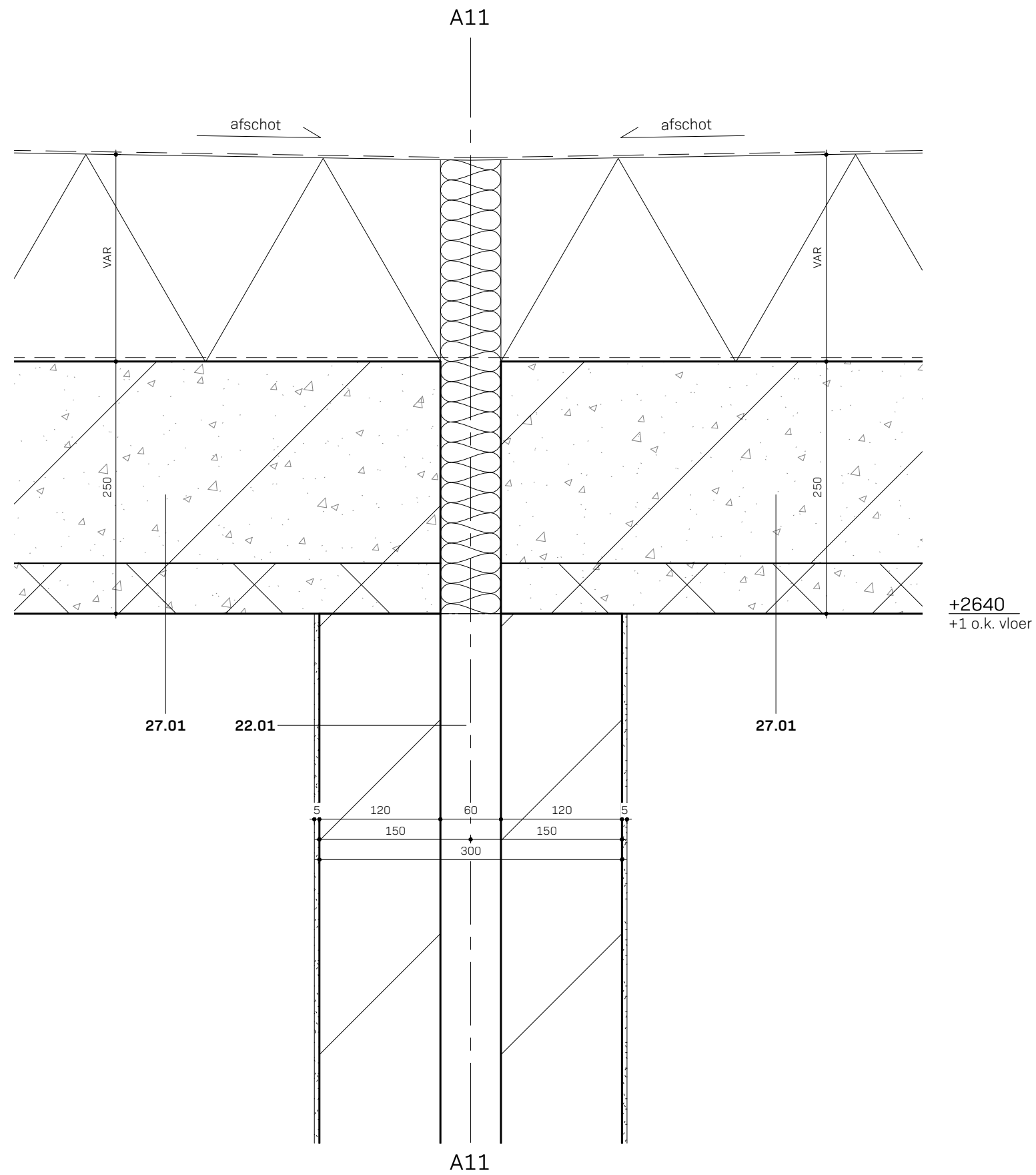


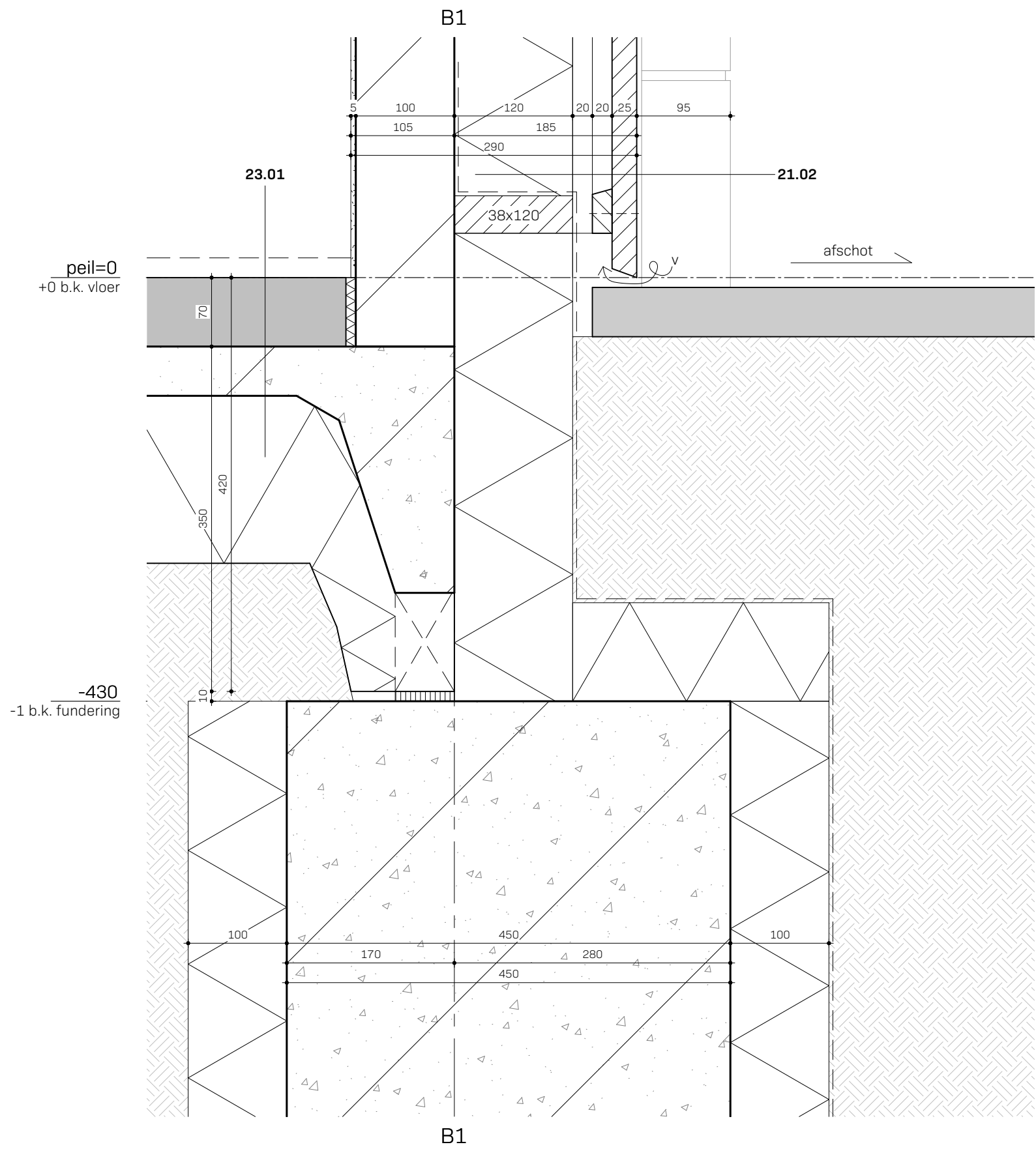
+3400  
+1 b.k. dakrand

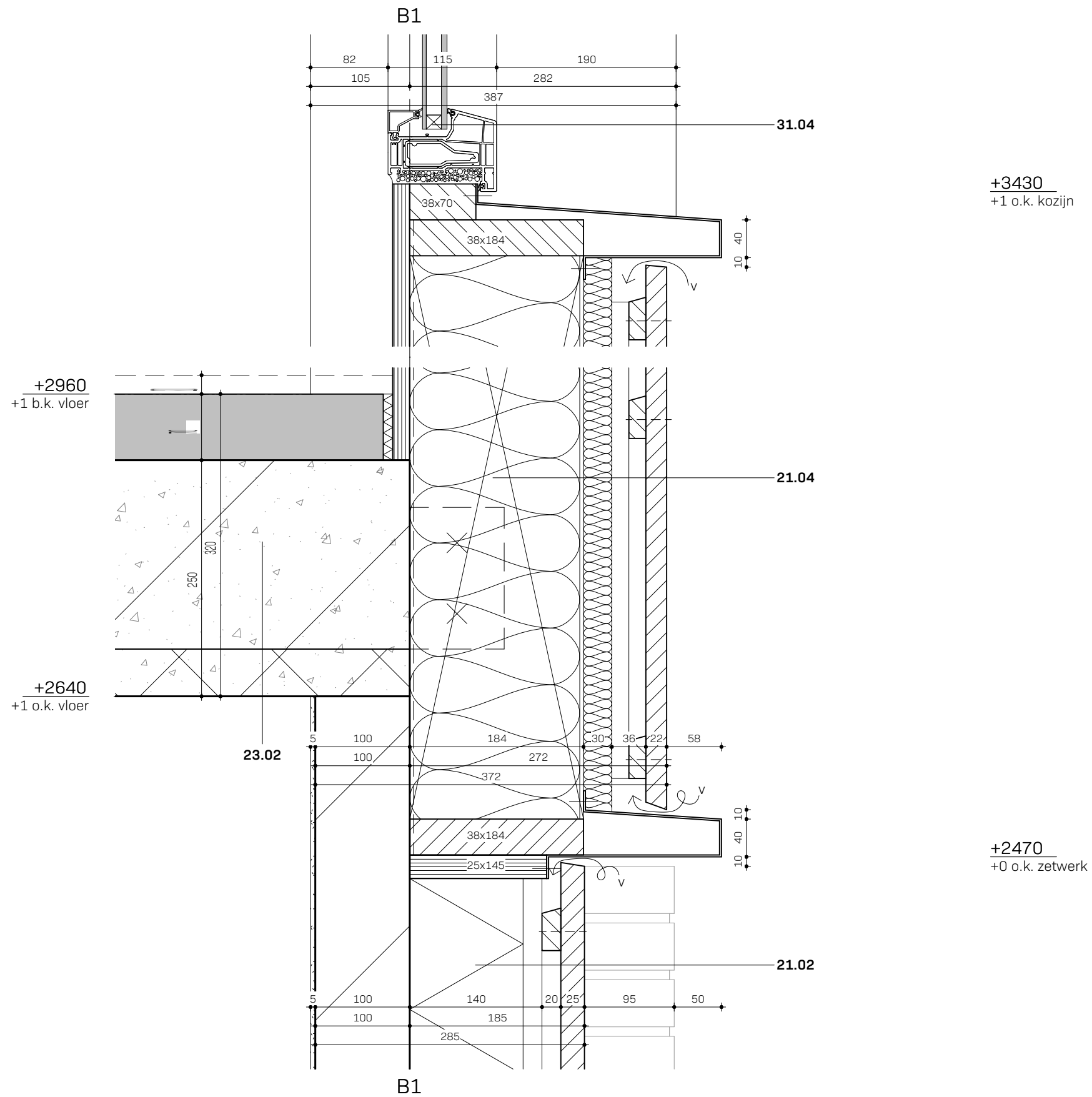


+2470  
+0 o.k. zetwerk

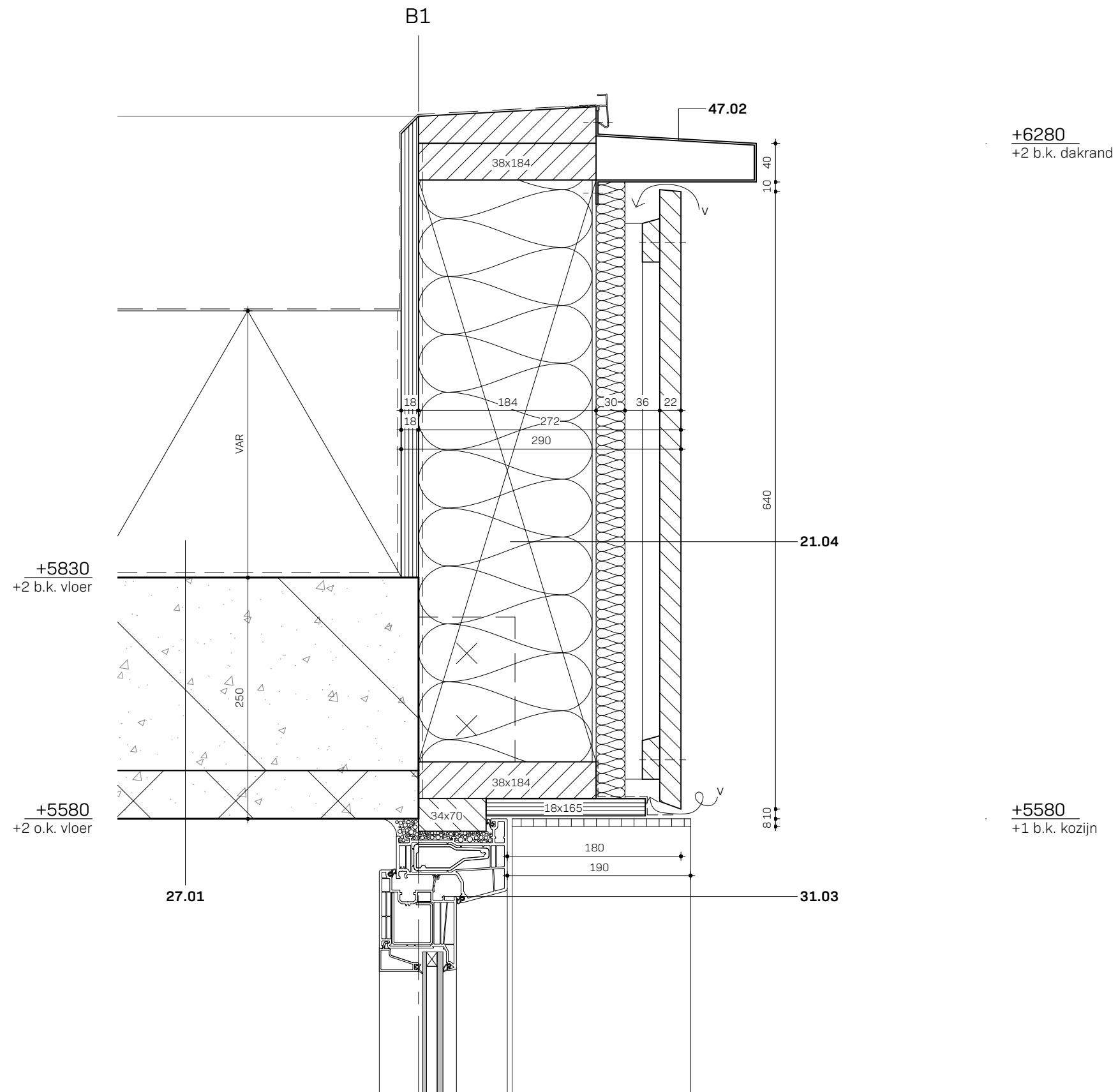
+2640  
+1 o.k. vloer

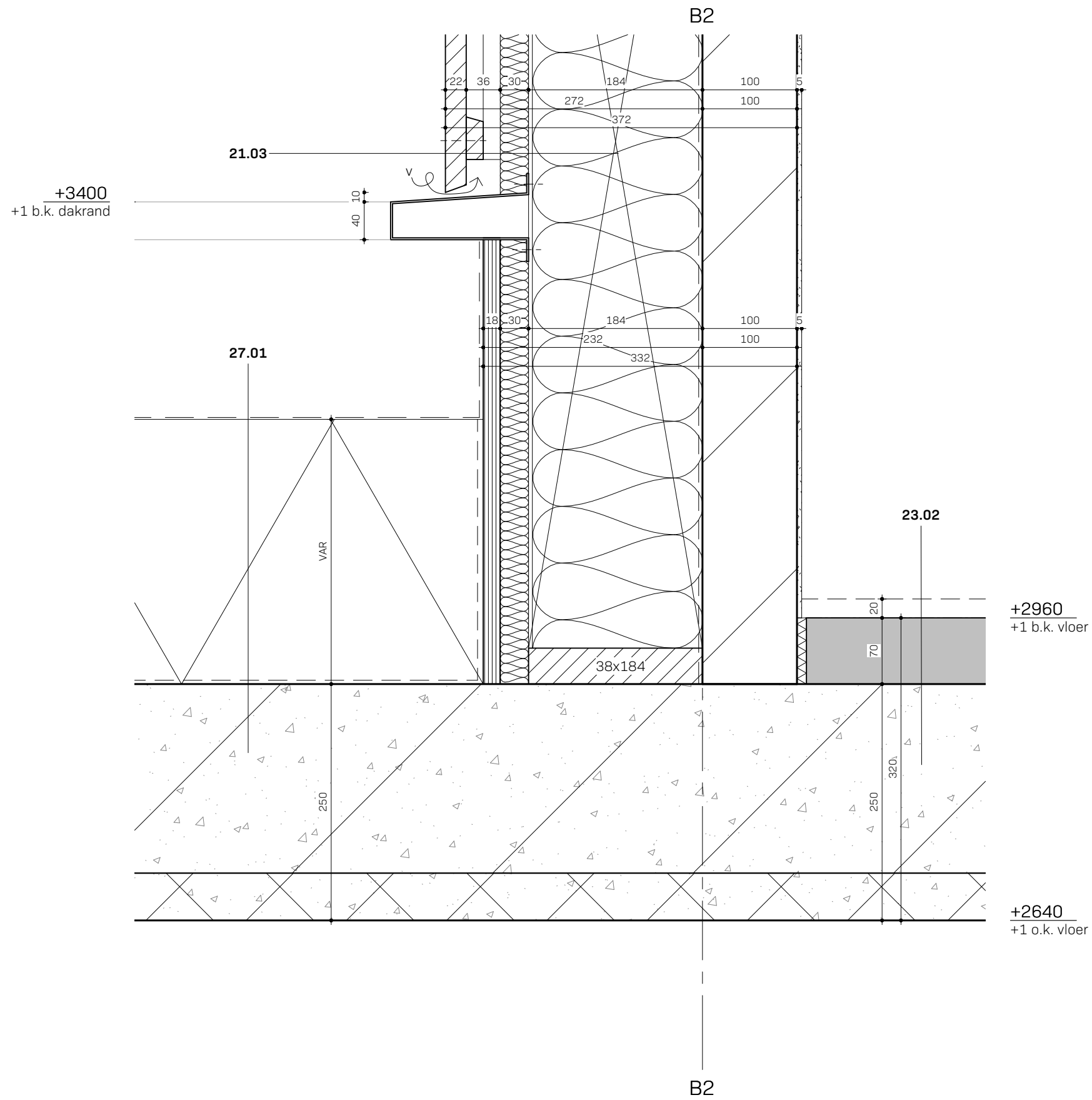












+6280  
+2 b.k. dakrand

